



## Flat 3 Westminster Place , Crewe, CW2 7LH

£625 PCM

This first floor one bed apartment is situated close to Nantwich Road and within walking distance of Crewe Railway Station.

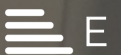
Accommodation is reached via communal front door and stairs leading to three separate apartments. Flat 3 Westminster Place accommodation comprises; entrance hall with doors leading to bathroom with shower over bath, double bedroom and kitchen. The kitchen has an oven and hob, there is plumbing for washing machine and space for under counter fridge and freezer. The lounge is accessed via the kitchen.

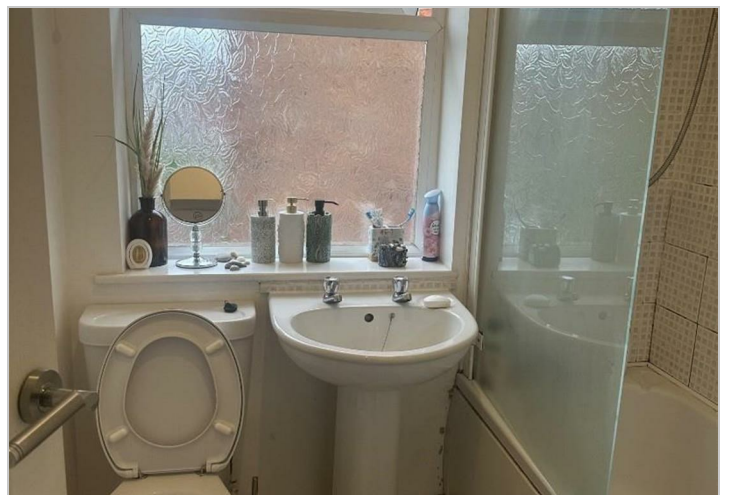
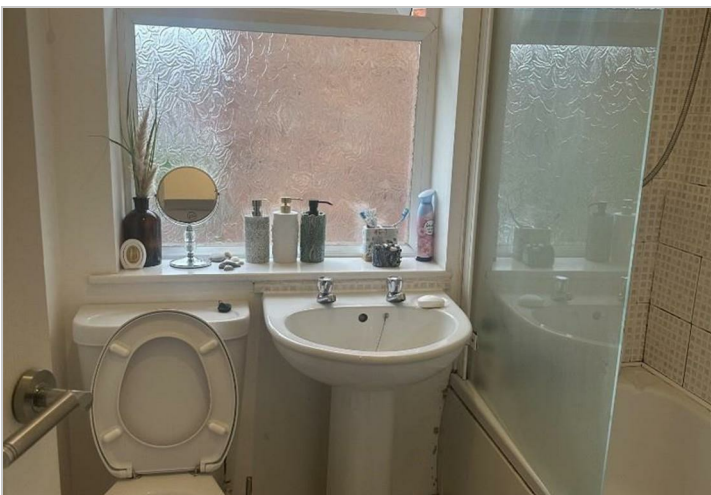
Rent excludes all utilities and is council tax band A

### Viewing

Please contact our Wright Lettings & Management Office on 01270 216478

if you wish to arrange a viewing appointment for this property or require further information.





These particulars, whilst believed to be accurate are set out as a general outline only for guidance and do not constitute any part of an offer or contract. Intending purchasers should not rely on them as statements of representation of fact, but must satisfy themselves by inspection or otherwise as to their accuracy. No person in this firm's employment has the authority to make or give any representation or warranty in respect of the property.